



Demographic and Income Profile

49 Oxford Dr, Lincolnshire, Illinois, 60069
 Ring: 1 mile radius

Prepared by Esri
 Latitude: 42.19839
 Longitude: -87.91659

Summary	Census 2010	2017	2022
Population	4,442	4,552	4,659
Households	1,576	1,662	1,712
Families	1,148	1,193	1,222
Average Household Size	2.71	2.65	2.64
Owner Occupied Housing Units	1,312	1,343	1,374
Renter Occupied Housing Units	264	319	338
Median Age	49.5	51.9	53.1
Trends: 2017 - 2022 Annual Rate	Area	State	National
Population	0.47%	0.17%	0.83%
Households	0.59%	0.17%	0.79%
Families	0.48%	0.06%	0.71%
Owner HHs	0.46%	0.09%	0.72%
Median Household Income	0.81%	1.98%	2.12%

Households by Income	2017		2022	
	Number	Percent	Number	Percent
<\$15,000	80	4.8%	90	5.3%
\$15,000 - \$24,999	60	3.6%	60	3.5%
\$25,000 - \$34,999	86	5.2%	83	4.8%
\$35,000 - \$49,999	80	4.8%	73	4.3%
\$50,000 - \$74,999	170	10.2%	152	8.9%
\$75,000 - \$99,999	160	9.6%	165	9.6%
\$100,000 - \$149,999	215	12.9%	235	13.7%
\$150,000 - \$199,999	203	12.2%	210	12.3%
\$200,000+	607	36.5%	645	37.7%
Median Household Income	\$143,680		\$149,562	
Average Household Income	\$210,871		\$226,323	
Per Capita Income	\$85,713		\$92,597	

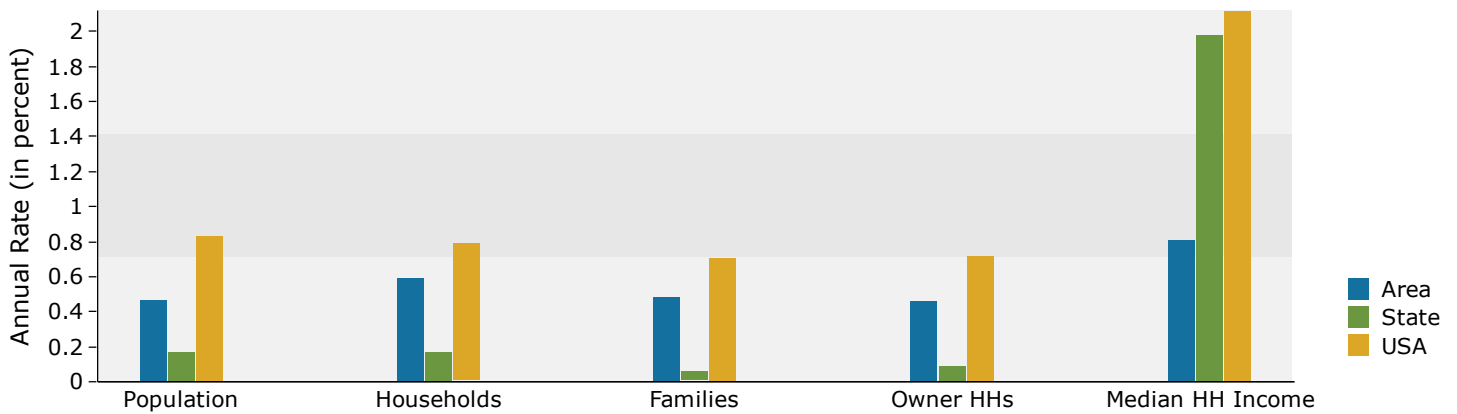
Population by Age	Census 2010		2017		2022	
	Number	Percent	Number	Percent	Number	Percent
0 - 4	163	3.7%	156	3.4%	160	3.4%
5 - 9	298	6.7%	250	5.5%	232	5.0%
10 - 14	345	7.8%	344	7.6%	319	6.8%
15 - 19	318	7.2%	319	7.0%	308	6.6%
20 - 24	99	2.2%	142	3.1%	140	3.0%
25 - 34	142	3.2%	199	4.4%	244	5.2%
35 - 44	515	11.6%	400	8.8%	402	8.6%
45 - 54	758	17.1%	692	15.2%	664	14.3%
55 - 64	674	15.2%	720	15.8%	727	15.6%
65 - 74	462	10.4%	634	13.9%	701	15.0%
75 - 84	420	9.5%	439	9.6%	508	10.9%
85+	246	5.5%	258	5.7%	254	5.5%

Race and Ethnicity	Census 2010		2017		2022	
	Number	Percent	Number	Percent	Number	Percent
White Alone	3,994	89.9%	3,982	87.5%	3,974	85.3%
Black Alone	43	1.0%	52	1.1%	59	1.3%
American Indian Alone	1	0.0%	1	0.0%	1	0.0%
Asian Alone	331	7.5%	428	9.4%	519	11.1%
Pacific Islander Alone	0	0.0%	0	0.0%	0	0.0%
Some Other Race Alone	21	0.5%	26	0.6%	31	0.7%
Two or More Races	52	1.2%	64	1.4%	75	1.6%
Hispanic Origin (Any Race)	124	2.8%	155	3.4%	187	4.0%

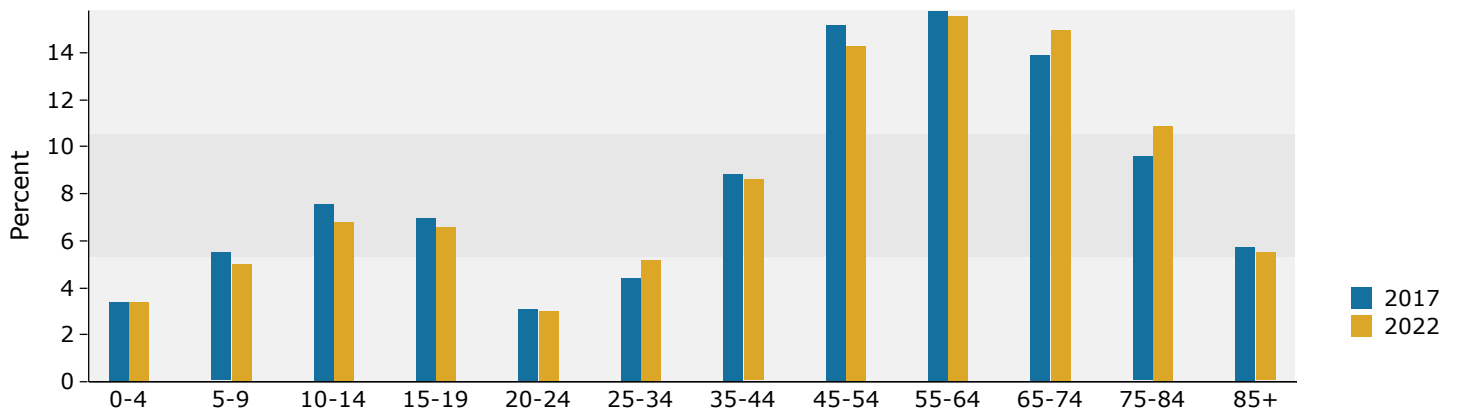
Data Note: Income is expressed in current dollars.

Source: U.S. Census Bureau, Census 2010 Summary File 1. Esri forecasts for 2017 and 2022.

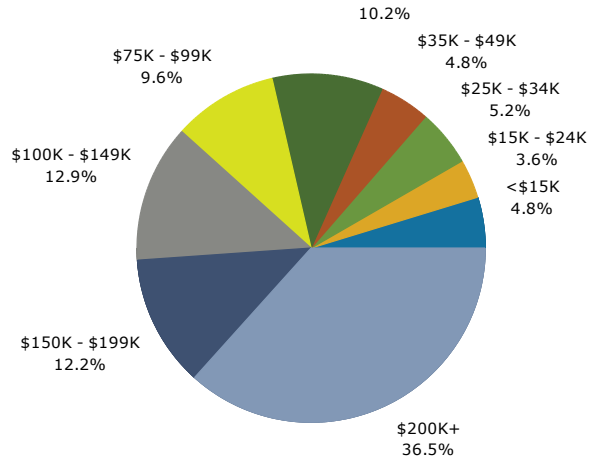
Trends 2017-2022



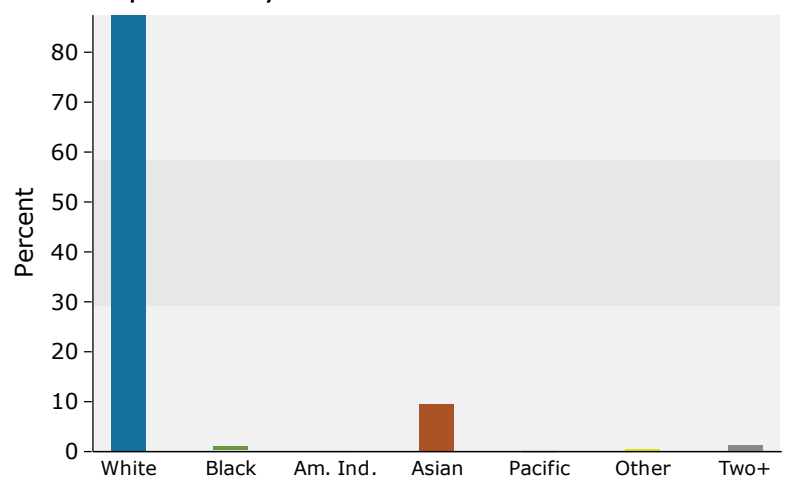
Population by Age



2017 Household Income



2017 Population by Race



2017 Percent Hispanic Origin: 3.4%



Demographic and Income Profile

49 Oxford Dr, Lincolnshire, Illinois, 60069
 Ring: 5 mile radius

Prepared by Esri

Latitude: 42.19839
 Longitude: -87.91659

Summary	Census 2010	2017	2022
Population	155,071	157,195	158,800
Households	57,936	59,354	60,157
Families	42,491	43,065	43,441
Average Household Size	2.64	2.61	2.61
Owner Occupied Housing Units	46,842	46,699	47,205
Renter Occupied Housing Units	11,094	12,655	12,952
Median Age	41.9	43.6	44.7
Trends: 2017 - 2022 Annual Rate	Area	State	National
Population	0.20%	0.17%	0.83%
Households	0.27%	0.17%	0.79%
Families	0.17%	0.06%	0.71%
Owner HHs	0.22%	0.09%	0.72%
Median Household Income	1.21%	1.98%	2.12%

Households by Income	2017		2022	
	Number	Percent	Number	Percent
<\$15,000	2,823	4.8%	2,960	4.9%
\$15,000 - \$24,999	2,938	4.9%	2,846	4.7%
\$25,000 - \$34,999	3,288	5.5%	3,060	5.1%
\$35,000 - \$49,999	4,736	8.0%	4,292	7.1%
\$50,000 - \$74,999	7,612	12.8%	6,644	11.0%
\$75,000 - \$99,999	7,349	12.4%	7,276	12.1%
\$100,000 - \$149,999	10,619	17.9%	11,562	19.2%
\$150,000 - \$199,999	7,141	12.0%	7,662	12.7%
\$200,000+	12,849	21.6%	13,857	23.0%
Median Household Income	\$102,985		\$109,383	
Average Household Income	\$150,309		\$163,819	
Per Capita Income	\$57,125		\$62,412	

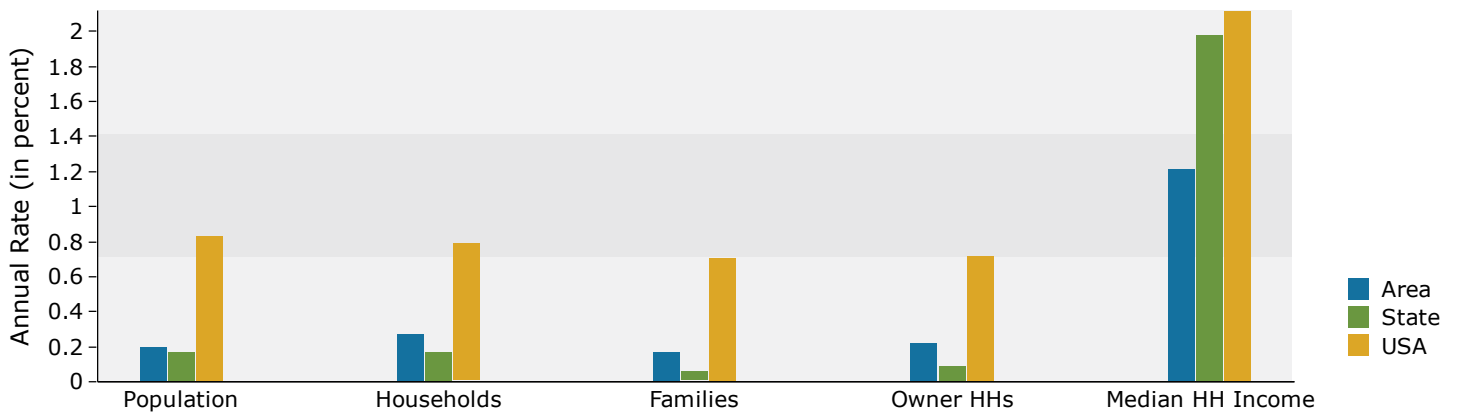
Population by Age	Census 2010		2017		2022	
	Number	Percent	Number	Percent	Number	Percent
0 - 4	8,391	5.4%	7,682	4.9%	7,708	4.9%
5 - 9	10,782	7.0%	9,756	6.2%	9,061	5.7%
10 - 14	11,645	7.5%	11,386	7.2%	10,469	6.6%
15 - 19	11,023	7.1%	10,366	6.6%	10,004	6.3%
20 - 24	6,871	4.4%	7,816	5.0%	6,939	4.4%
25 - 34	14,743	9.5%	15,448	9.8%	16,464	10.4%
35 - 44	21,142	13.6%	18,856	12.0%	19,430	12.2%
45 - 54	27,160	17.5%	23,692	15.1%	21,723	13.7%
55 - 64	21,320	13.7%	24,304	15.5%	23,833	15.0%
65 - 74	10,932	7.0%	15,644	10.0%	18,871	11.9%
75 - 84	7,227	4.7%	7,894	5.0%	9,814	6.2%
85+	3,835	2.5%	4,352	2.8%	4,484	2.8%

Race and Ethnicity	Census 2010		2017		2022	
	Number	Percent	Number	Percent	Number	Percent
White Alone	124,836	80.5%	121,309	77.2%	118,254	74.5%
Black Alone	2,122	1.4%	2,210	1.4%	2,264	1.4%
American Indian Alone	418	0.3%	431	0.3%	448	0.3%
Asian Alone	18,097	11.7%	22,337	14.2%	25,991	16.4%
Pacific Islander Alone	40	0.0%	44	0.0%	45	0.0%
Some Other Race Alone	6,861	4.4%	7,717	4.9%	8,333	5.2%
Two or More Races	2,697	1.7%	3,147	2.0%	3,466	2.2%
Hispanic Origin (Any Race)	16,785	10.8%	19,048	12.1%	20,914	13.2%

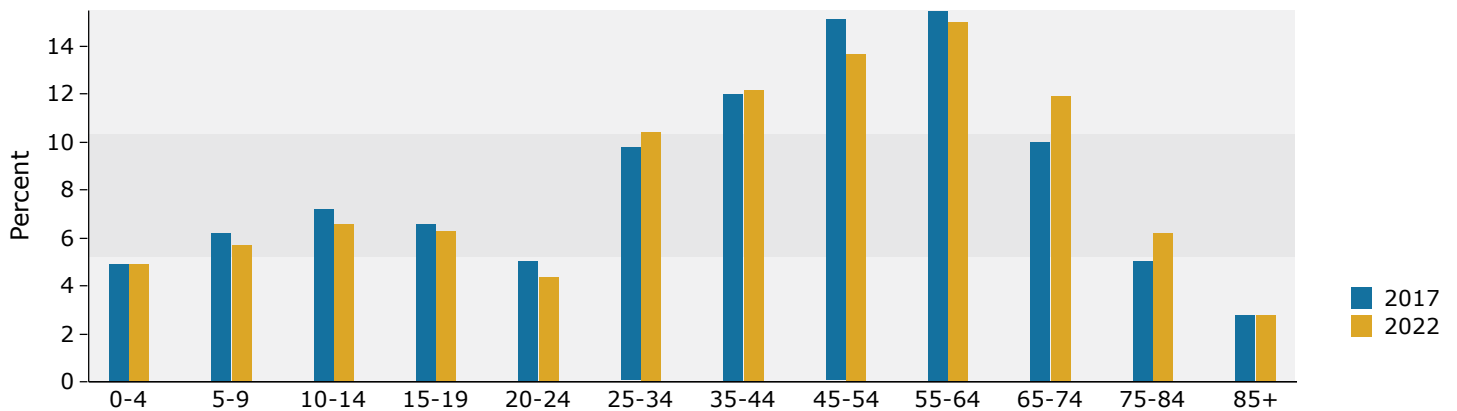
Data Note: Income is expressed in current dollars.

Source: U.S. Census Bureau, Census 2010 Summary File 1. Esri forecasts for 2017 and 2022.

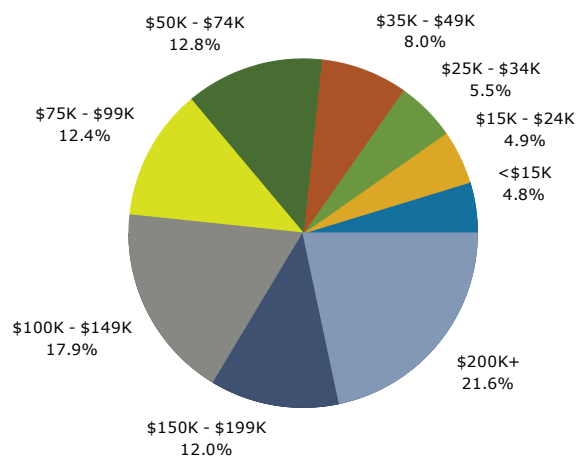
Trends 2017-2022



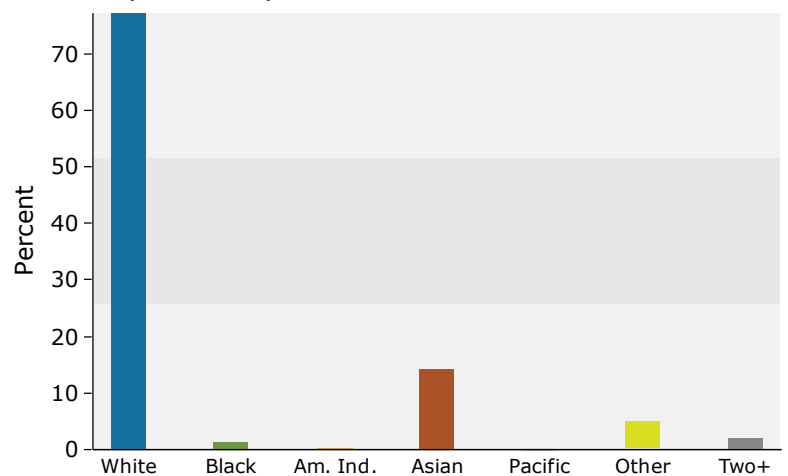
Population by Age



2017 Household Income



2017 Population by Race



2017 Percent Hispanic Origin: 12.1%



Demographic and Income Profile

49 Oxford Dr, Lincolnshire, Illinois, 60069
 Ring: 10 mile radius

Prepared by Esri
 Latitude: 42.19839
 Longitude: -87.91659

Summary	Census 2010	2017	2022
Population	629,001	637,567	644,616
Households	231,122	236,324	239,388
Families	165,596	167,699	169,138
Average Household Size	2.63	2.62	2.62
Owner Occupied Housing Units	179,770	178,843	180,729
Renter Occupied Housing Units	51,352	57,481	58,660
Median Age	40.2	41.6	42.4
Trends: 2017 - 2022 Annual Rate	Area	State	National
Population	0.22%	0.17%	0.83%
Households	0.26%	0.17%	0.79%
Families	0.17%	0.06%	0.71%
Owner HHs	0.21%	0.09%	0.72%
Median Household Income	1.83%	1.98%	2.12%

Households by Income	2017		2022	
	Number	Percent	Number	Percent
<\$15,000	12,399	5.2%	12,796	5.3%
\$15,000 - \$24,999	13,544	5.7%	13,092	5.5%
\$25,000 - \$34,999	13,998	5.9%	12,932	5.4%
\$35,000 - \$49,999	22,005	9.3%	19,915	8.3%
\$50,000 - \$74,999	33,887	14.3%	29,589	12.4%
\$75,000 - \$99,999	29,322	12.4%	29,090	12.2%
\$100,000 - \$149,999	42,612	18.0%	46,949	19.6%
\$150,000 - \$199,999	26,467	11.2%	28,826	12.0%
\$200,000+	42,089	17.8%	46,197	19.3%
Median Household Income	\$92,777		\$101,586	
Average Household Income	\$134,019		\$147,354	
Per Capita Income	\$50,409		\$55,446	

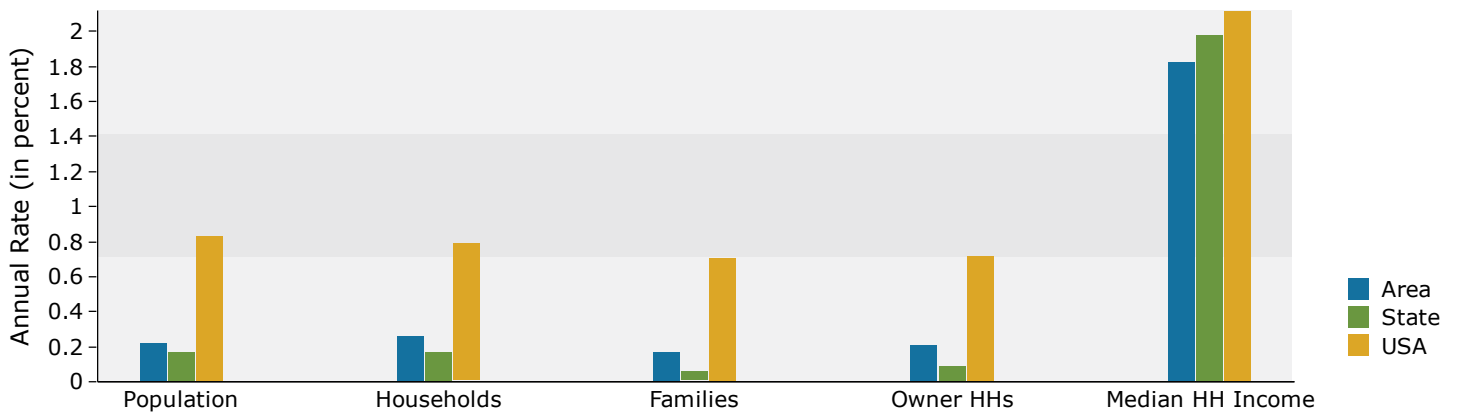
Population by Age	Census 2010		2017		2022	
	Number	Percent	Number	Percent	Number	Percent
0 - 4	36,306	5.8%	33,283	5.2%	33,482	5.2%
5 - 9	42,483	6.8%	39,450	6.2%	37,031	5.7%
10 - 14	45,311	7.2%	44,318	7.0%	41,777	6.5%
15 - 19	46,119	7.3%	43,662	6.8%	42,549	6.6%
20 - 24	35,943	5.7%	38,572	6.0%	35,399	5.5%
25 - 34	67,985	10.8%	70,451	11.0%	73,018	11.3%
35 - 44	83,250	13.2%	75,374	11.8%	79,761	12.4%
45 - 54	103,386	16.4%	90,520	14.2%	82,799	12.8%
55 - 64	80,313	12.8%	92,057	14.4%	90,409	14.0%
65 - 74	44,237	7.0%	60,933	9.6%	71,730	11.1%
75 - 84	29,426	4.7%	31,827	5.0%	38,712	6.0%
85+	14,243	2.3%	17,119	2.7%	17,949	2.8%

Race and Ethnicity	Census 2010		2017		2022	
	Number	Percent	Number	Percent	Number	Percent
White Alone	504,385	80.2%	493,842	77.5%	485,333	75.3%
Black Alone	19,947	3.2%	19,265	3.0%	18,862	2.9%
American Indian Alone	1,629	0.3%	1,649	0.3%	1,703	0.3%
Asian Alone	59,250	9.4%	73,435	11.5%	85,219	13.2%
Pacific Islander Alone	203	0.0%	226	0.0%	238	0.0%
Some Other Race Alone	31,340	5.0%	35,016	5.5%	37,847	5.9%
Two or More Races	12,247	1.9%	14,135	2.2%	15,414	2.4%
Hispanic Origin (Any Race)	77,925	12.4%	87,628	13.7%	96,064	14.9%

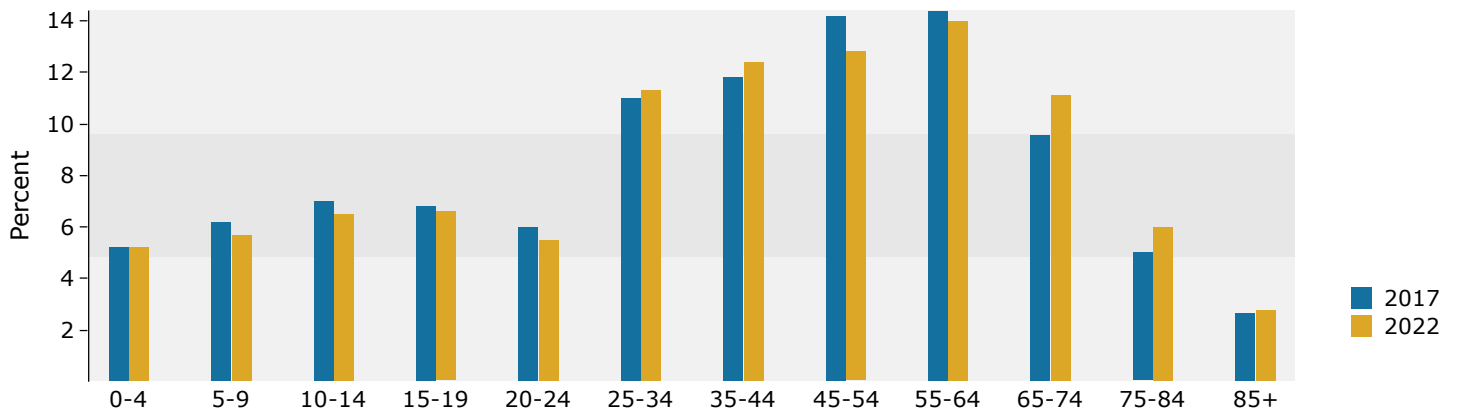
Data Note: Income is expressed in current dollars.

Source: U.S. Census Bureau, Census 2010 Summary File 1. Esri forecasts for 2017 and 2022.

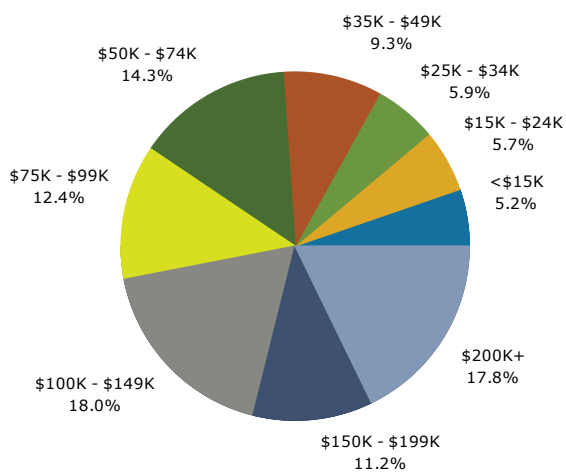
Trends 2017-2022



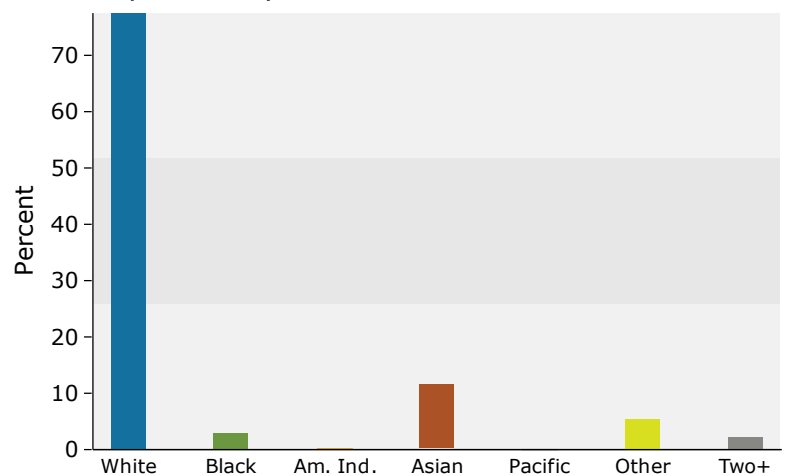
Population by Age



2017 Household Income



2017 Population by Race



2017 Percent Hispanic Origin: 13.7%