



# Demographic and Income Profile

49 Oxford Dr, Lincolnshire, Illinois, 60069 3  
 49 Oxford Dr, Lincolnshire, Illinois, 60069  
 Drive Time: 5 minute radius

Prepared by Esri  
 Latitude: 42.19857  
 Longitude: -87.91660

Summary	Census 2010	Census 2020	2022	2027
Population	8,284	9,063	9,120	9,045
Households	2,775	2,964	2,964	2,953
Families	2,124	-	2,222	2,205
Average Household Size	2.82	2.91	2.93	2.91
Owner Occupied Housing Units	2,341	-	2,521	2,530
Renter Occupied Housing Units	434	-	443	423
Median Age	45.9	-	49.8	50.9

Trends: 2022-2027 Annual Rate	Area	State	National
Population	-0.17%	-0.28%	0.25%
Households	-0.07%	-0.14%	0.31%
Families	-0.15%	-0.20%	0.28%
Owner HHs	0.07%	0.15%	0.53%
Median Household Income	1.08%	3.11%	3.12%

Households by Income	2022		2027	
	Number	Percent	Number	Percent
<\$15,000	83	2.8%	59	2.0%
\$15,000 - \$24,999	87	2.9%	59	2.0%
\$25,000 - \$34,999	60	2.0%	42	1.4%
\$35,000 - \$49,999	128	4.3%	101	3.4%
\$50,000 - \$74,999	186	6.3%	157	5.3%
\$75,000 - \$99,999	200	6.7%	170	5.8%
\$100,000 - \$149,999	500	16.9%	529	17.9%
\$150,000 - \$199,999	420	14.2%	480	16.3%
\$200,000+	1,299	43.8%	1,355	45.9%
Median Household Income	\$174,744		\$184,412	
Average Household Income	\$249,572		\$272,908	
Per Capita Income	\$86,294		\$95,099	

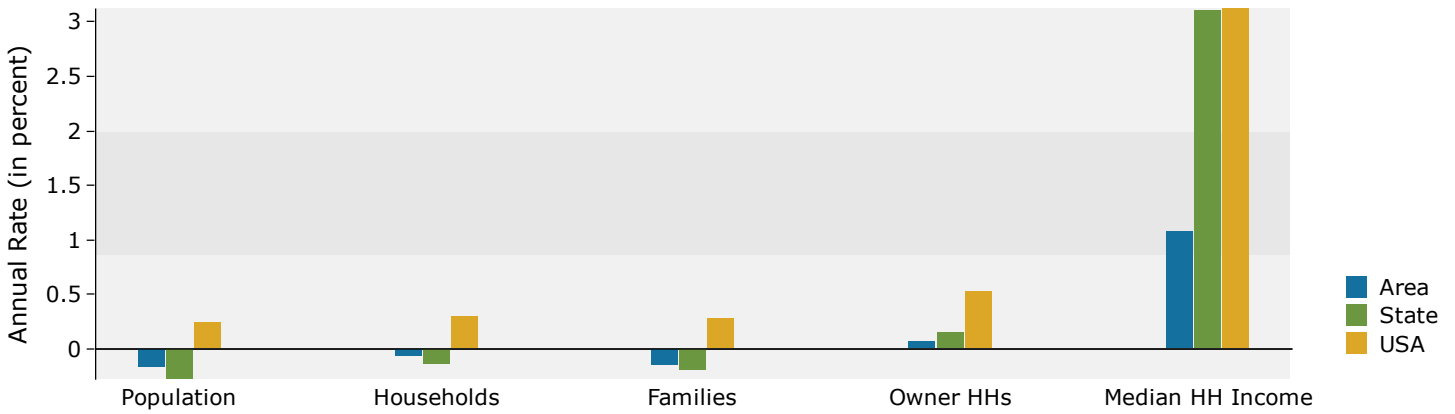
Population by Age	Census 2010		2022		2027	
	Number	Percent	Number	Percent	Number	Percent
0 - 4	330	4.0%	323	3.5%	326	3.6%
5 - 9	563	6.8%	450	4.9%	440	4.9%
10 - 14	657	7.9%	631	6.9%	546	6.0%
15 - 19	652	7.9%	746	8.2%	656	7.3%
20 - 24	341	4.1%	424	4.6%	366	4.0%
25 - 34	417	5.0%	577	6.3%	600	6.6%
35 - 44	1,047	12.6%	839	9.2%	970	10.7%
45 - 54	1,467	17.7%	1,275	14.0%	1,124	12.4%
55 - 64	1,178	14.2%	1,415	15.5%	1,334	14.7%
65 - 74	712	8.6%	1,219	13.4%	1,284	14.2%
75 - 84	576	7.0%	824	9.0%	975	10.8%
85+	344	4.2%	398	4.4%	425	4.7%

Race and Ethnicity	Census 2010		Census 2020		2022		2027	
	Number	Percent	Number	Percent	Number	Percent	Number	Percent
White Alone	6,931	83.7%	6,047	66.7%	6,021	66.0%	5,752	63.6%
Black Alone	116	1.4%	140	1.5%	142	1.6%	143	1.6%
American Indian Alone	4	0.0%	14	0.2%	14	0.2%	15	0.2%
Asian Alone	1,075	13.0%	2,242	24.7%	2,295	25.2%	2,409	26.6%
Pacific Islander Alone	0	0.0%	2	0.0%	2	0.0%	2	0.0%
Some Other Race Alone	45	0.5%	139	1.5%	143	1.6%	159	1.8%
Two or More Races	113	1.4%	479	5.3%	503	5.5%	565	6.2%
Hispanic Origin (Any Race)	235	2.8%	400	4.4%	414	4.5%	441	4.9%

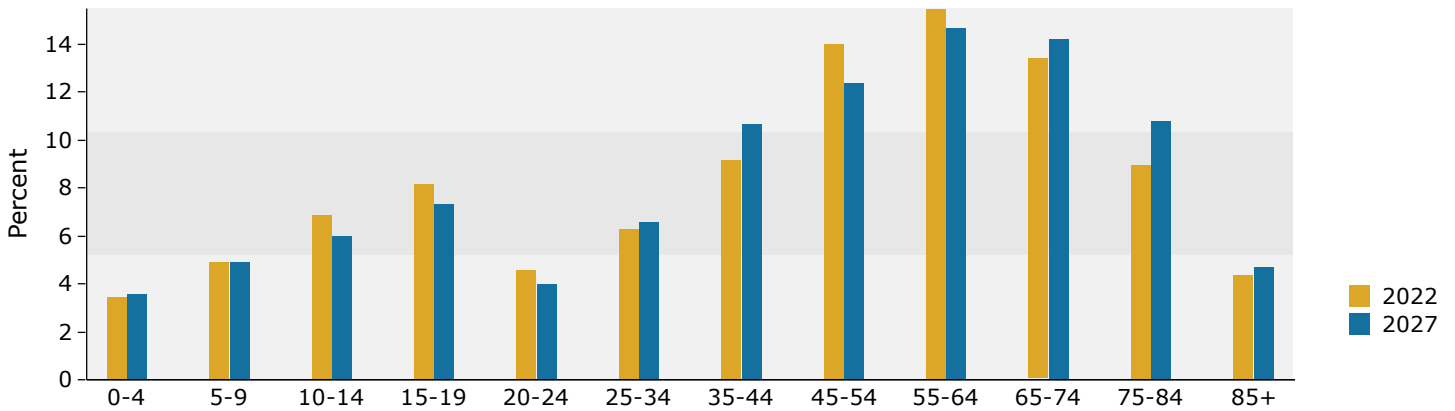
**Data Note:** Income is expressed in current dollars.

**Source:** Esri forecasts for 2022 and 2027. U.S. Census Bureau 2010 decennial Census data converted by Esri into 2020 geography.

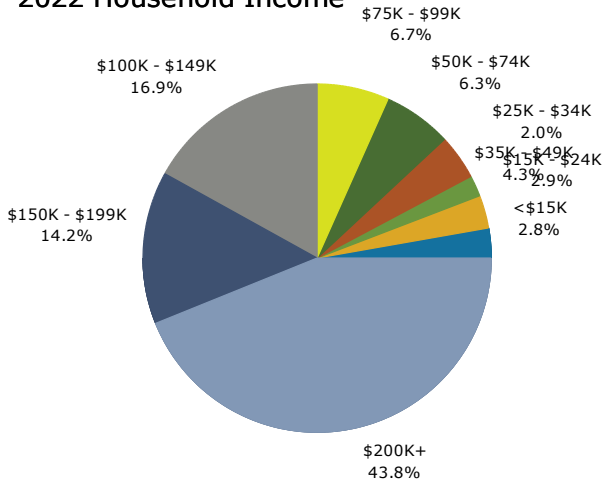
## Trends 2022-2027



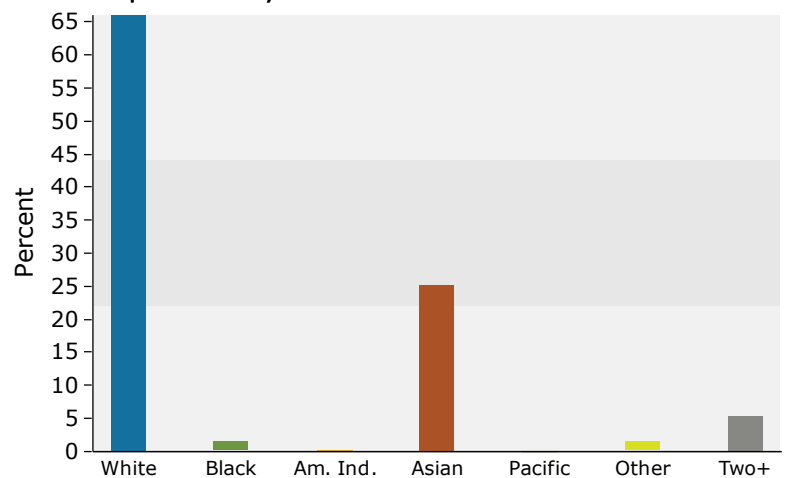
## Population by Age



## 2022 Household Income



## 2022 Population by Race



2022 Percent Hispanic Origin: 4.5%

Source: Esri forecasts for 2022 and 2027. U.S. Census Bureau 2010 decennial Census data converted by Esri into 2020 geography.



# Demographic and Income Profile

49 Oxford Dr, Lincolnshire, Illinois, 60069 3  
 49 Oxford Dr, Lincolnshire, Illinois, 60069  
 Drive Time: 10 minute radius

Prepared by Esri  
 Latitude: 42.19857  
 Longitude: -87.91660

Summary	Census 2010	Census 2020	2022	2027
Population	65,056	69,562	70,656	71,268
Households	23,915	25,540	25,945	26,347
Families	18,090	-	19,231	19,490
Average Household Size	2.67	2.66	2.66	2.65
Owner Occupied Housing Units	19,236	-	20,004	20,453
Renter Occupied Housing Units	4,679	-	5,941	5,894
Median Age	42.4	-	44.5	45.1

Trends: 2022-2027 Annual Rate	Area	State	National
Population	0.17%	-0.28%	0.25%
Households	0.31%	-0.14%	0.31%
Families	0.27%	-0.20%	0.28%
Owner HHs	0.44%	0.15%	0.53%
Median Household Income	1.59%	3.11%	3.12%

Households by Income	2022		2027	
	Number	Percent	Number	Percent
<\$15,000	766	3.0%	554	2.1%
\$15,000 - \$24,999	697	2.7%	474	1.8%
\$25,000 - \$34,999	567	2.2%	372	1.4%
\$35,000 - \$49,999	1,297	5.0%	1,024	3.9%
\$50,000 - \$74,999	2,210	8.5%	1,912	7.3%
\$75,000 - \$99,999	2,593	10.0%	2,311	8.8%
\$100,000 - \$149,999	4,801	18.5%	5,082	19.3%
\$150,000 - \$199,999	3,756	14.5%	4,494	17.1%
\$200,000+	9,258	35.7%	10,123	38.4%

Median Household Income	\$150,405	\$162,729
Average Household Income	\$211,570	\$233,777
Per Capita Income	\$77,690	\$86,447

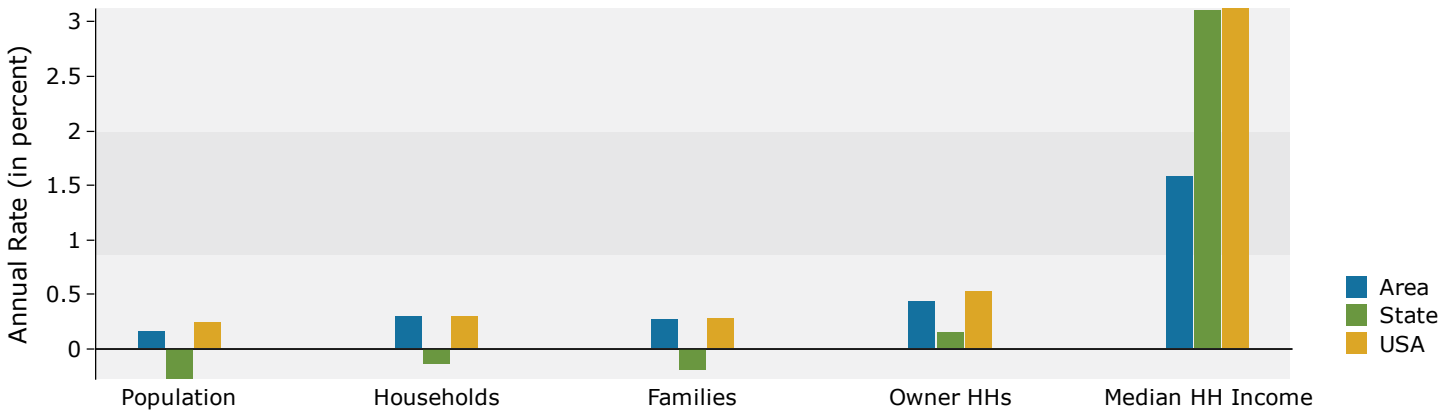
Population by Age	Census 2010		2022		2027	
	Number	Percent	Number	Percent	Number	Percent
0 - 4	3,271	5.0%	3,172	4.5%	3,239	4.5%
5 - 9	4,618	7.1%	4,112	5.8%	4,038	5.7%
10 - 14	5,103	7.8%	4,922	7.0%	4,483	6.3%
15 - 19	4,917	7.6%	4,926	7.0%	4,476	6.3%
20 - 24	2,907	4.5%	3,263	4.6%	2,928	4.1%
25 - 34	5,575	8.6%	7,046	10.0%	7,034	9.9%
35 - 44	8,697	13.4%	8,344	11.8%	9,342	13.1%
45 - 54	12,012	18.5%	9,701	13.7%	9,216	12.9%
55 - 64	9,127	14.0%	11,071	15.7%	9,898	13.9%
65 - 74	4,325	6.6%	7,969	11.3%	9,070	12.7%
75 - 84	2,963	4.6%	4,247	6.0%	5,471	7.7%
85+	1,541	2.4%	1,882	2.7%	2,075	2.9%

Race and Ethnicity	Census 2010		Census 2020		2022		2027	
	Number	Percent	Number	Percent	Number	Percent	Number	Percent
White Alone	53,237	81.8%	46,371	66.7%	46,725	66.1%	45,590	64.0%
Black Alone	847	1.3%	1,113	1.6%	1,132	1.6%	1,152	1.6%
American Indian Alone	86	0.1%	223	0.3%	232	0.3%	253	0.4%
Asian Alone	8,480	13.0%	16,109	23.2%	16,534	23.4%	17,468	24.5%
Pacific Islander Alone	13	0.0%	20	0.0%	20	0.0%	21	0.0%
Some Other Race Alone	1,412	2.2%	1,872	2.7%	1,941	2.7%	2,152	3.0%
Two or More Races	982	1.5%	3,853	5.5%	4,072	5.8%	4,632	6.5%
Hispanic Origin (Any Race)	3,688	5.7%	4,526	6.5%	4,697	6.6%	5,064	7.1%

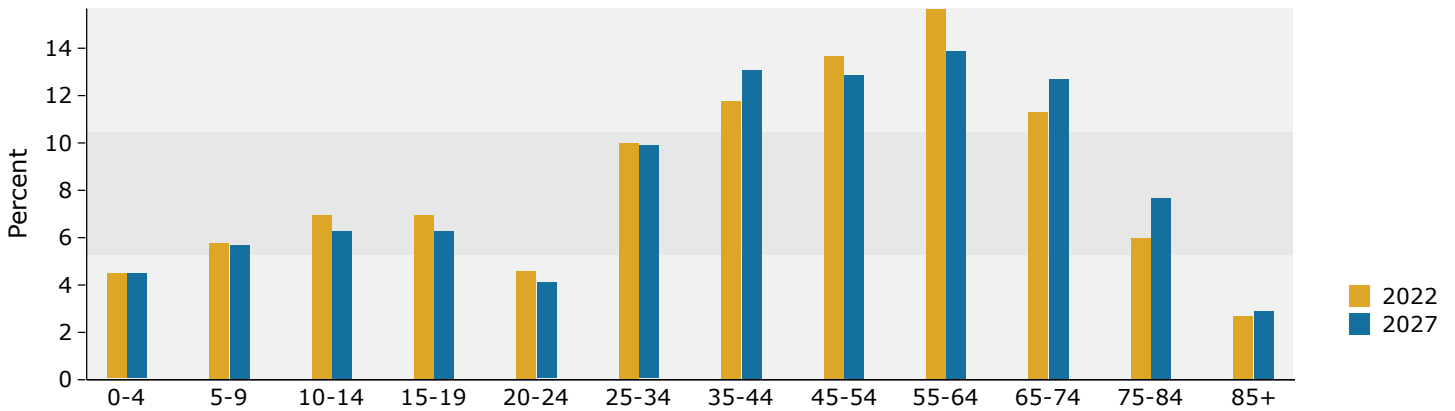
**Data Note:** Income is expressed in current dollars.

**Source:** Esri forecasts for 2022 and 2027. U.S. Census Bureau 2010 decennial Census data converted by Esri into 2020 geography.

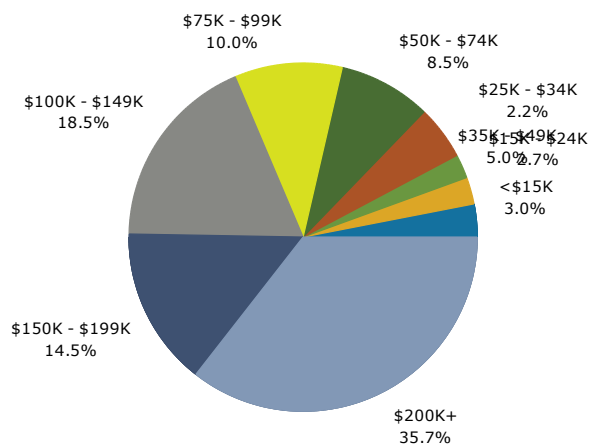
## Trends 2022-2027



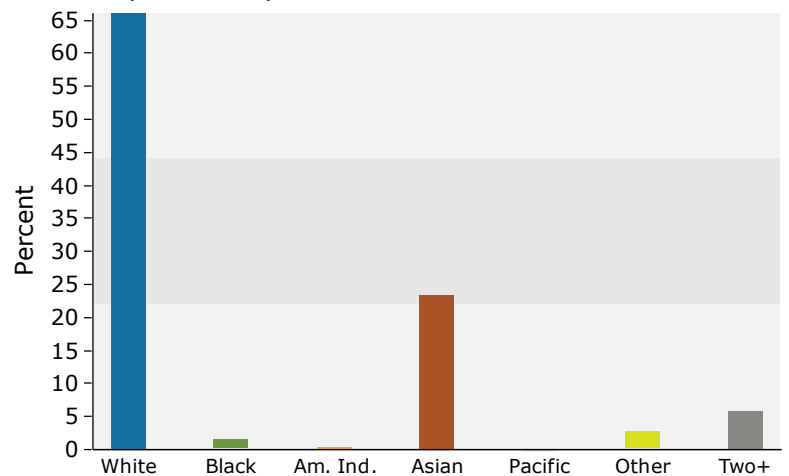
## Population by Age



## 2022 Household Income



## 2022 Population by Race



2022 Percent Hispanic Origin: 6.6%

Source: Esri forecasts for 2022 and 2027. U.S. Census Bureau 2010 decennial Census data converted by Esri into 2020 geography.



# Demographic and Income Profile

49 Oxford Dr, Lincolnshire, Illinois, 60069 3  
 49 Oxford Dr, Lincolnshire, Illinois, 60069  
 Drive Time: 15 minute radius

Prepared by Esri  
 Latitude: 42.19857  
 Longitude: -87.91660

Summary	Census 2010	Census 2020	2022	2027
Population	261,258	271,819	272,038	269,802
Households	96,970	101,438	102,076	101,905
Families	70,873	-	72,963	72,712
Average Household Size	2.66	2.64	2.62	2.60
Owner Occupied Housing Units	77,085	-	78,785	79,420
Renter Occupied Housing Units	19,885	-	23,291	22,485
Median Age	41.8	-	44.1	44.6

Trends: 2022-2027 Annual Rate	Area	State	National
Population	-0.16%	-0.28%	0.25%
Households	-0.03%	-0.14%	0.31%
Families	-0.07%	-0.20%	0.28%
Owner HHs	0.16%	0.15%	0.53%
Median Household Income	3.04%	3.11%	3.12%

Households by Income	2022		2027	
	Number	Percent	Number	Percent
<\$15,000	3,804	3.7%	2,733	2.7%
\$15,000 - \$24,999	3,447	3.4%	2,315	2.3%
\$25,000 - \$34,999	3,989	3.9%	2,767	2.7%
\$35,000 - \$49,999	6,602	6.5%	5,114	5.0%
\$50,000 - \$74,999	10,596	10.4%	9,109	8.9%
\$75,000 - \$99,999	10,548	10.3%	9,720	9.5%
\$100,000 - \$149,999	19,249	18.9%	20,011	19.6%
\$150,000 - \$199,999	14,426	14.1%	17,109	16.8%
\$200,000+	29,409	28.8%	33,021	32.4%

Median Household Income	\$126,627	\$147,092
Average Household Income	\$184,130	\$208,353
Per Capita Income	\$69,128	\$78,732

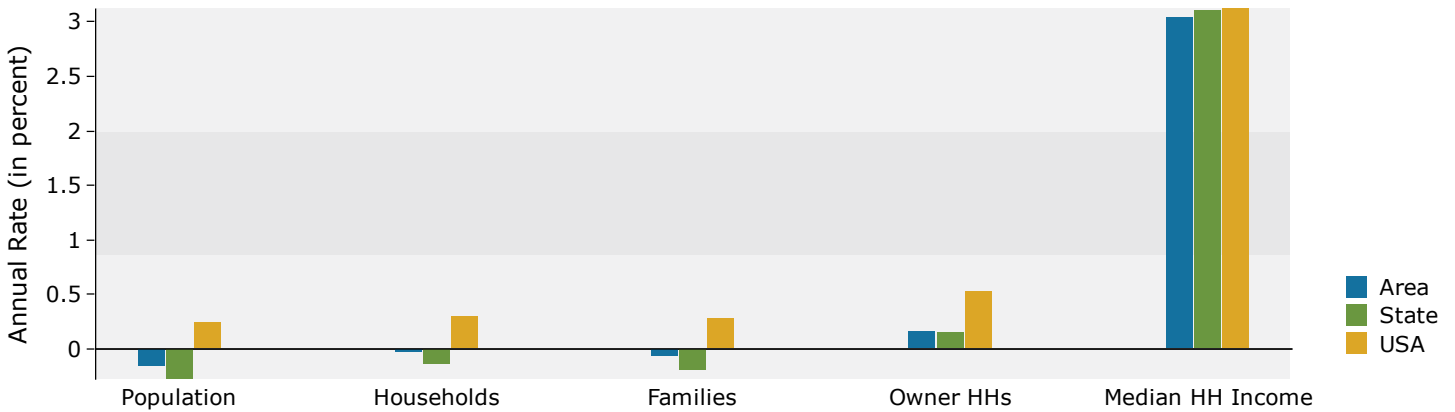
Population by Age	Census 2010		2022		2027	
	Number	Percent	Number	Percent	Number	Percent
0 - 4	14,513	5.6%	13,202	4.9%	13,223	4.9%
5 - 9	18,349	7.0%	16,021	5.9%	15,561	5.8%
10 - 14	19,788	7.6%	18,637	6.9%	16,880	6.3%
15 - 19	18,429	7.1%	17,846	6.6%	16,035	5.9%
20 - 24	11,597	4.4%	13,050	4.8%	11,723	4.3%
25 - 34	24,857	9.5%	28,064	10.3%	28,271	10.5%
35 - 44	35,343	13.5%	32,157	11.8%	34,491	12.8%
45 - 54	44,939	17.2%	36,024	13.2%	33,533	12.4%
55 - 64	35,574	13.6%	40,653	14.9%	36,267	13.4%
65 - 74	18,882	7.2%	31,304	11.5%	34,114	12.6%
75 - 84	12,583	4.8%	17,029	6.3%	20,993	7.8%
85+	6,405	2.5%	8,053	3.0%	8,711	3.2%

Race and Ethnicity	Census 2010		Census 2020		2022		2027	
	Number	Percent	Number	Percent	Number	Percent	Number	Percent
White Alone	210,886	80.7%	184,211	67.8%	182,767	67.2%	175,583	65.1%
Black Alone	3,798	1.5%	4,479	1.6%	4,487	1.6%	4,434	1.6%
American Indian Alone	752	0.3%	1,578	0.6%	1,628	0.6%	1,761	0.7%
Asian Alone	27,695	10.6%	43,509	16.0%	44,240	16.3%	46,267	17.1%
Pacific Islander Alone	72	0.0%	78	0.0%	78	0.0%	79	0.0%
Some Other Race Alone	13,277	5.1%	17,071	6.3%	17,228	6.3%	18,075	6.7%
Two or More Races	4,778	1.8%	20,893	7.7%	21,610	7.9%	23,603	8.7%
Hispanic Origin (Any Race)	32,642	12.5%	36,839	13.6%	37,200	13.7%	38,419	14.2%

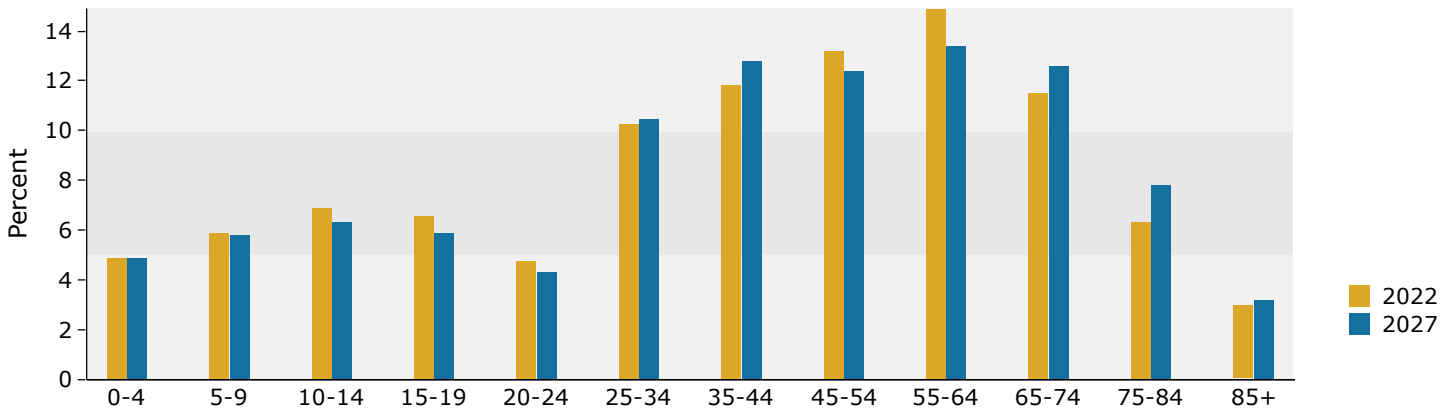
Data Note: Income is expressed in current dollars.

Source: Esri forecasts for 2022 and 2027. U.S. Census Bureau 2010 decennial Census data converted by Esri into 2020 geography.

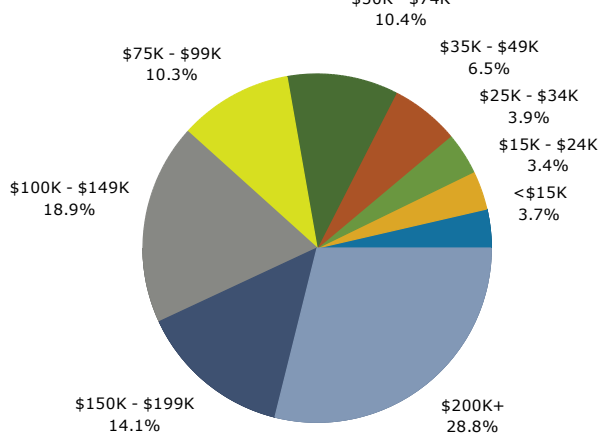
## Trends 2022-2027



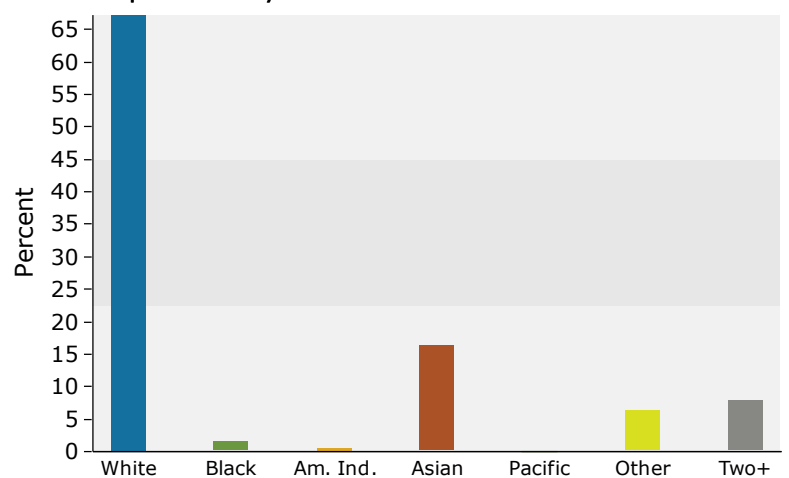
## Population by Age



## 2022 Household Income



## 2022 Population by Race



2022 Percent Hispanic Origin: 13.7%